



S.A.V.E.R. Transport measurement

Guston

Washington - London

Michel Magendans
Directeur Sebert Trillingstechniek

4-10-2023





Thanks Marc Bongaarts, Head of collection care Technicians from Stedelijk Museum Amsterdam shearing the information!!!





Installation SAVER

Ch1,2 and 3: below CM
Ch4,5 and 6: Above CM
Ch7,8 and 9: Above CM

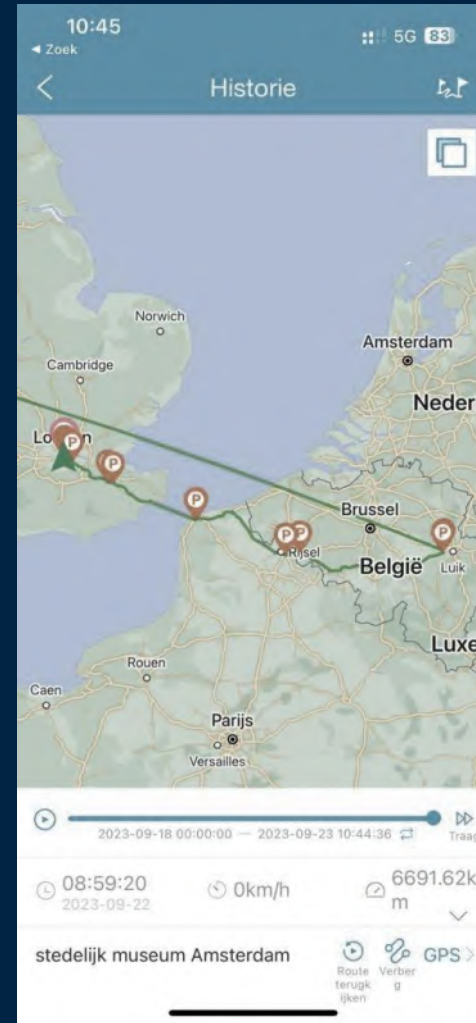
Note: Ch3, Ch6 and Ch9 place in vertical direction



CM: Cushioning Material



Transport route Washington - London



15 sept 2023
Guston - Washington
National Gallery re-Act

SAVER AAN 20.11 uur
18 september 14:18 uur CET
GPS
Local = 14:40 CET
Start Laden NGA
Verlade 15:46 CET
09:46 Local
JFK 21:30 = 15:30

Uittladen
18:51 local JFK
20:52 local POB
02:52 CET

006 08 Rel
291, 36 Auto
El Anatsui White Van

GRADY 08:00 bij hotel
Tate Trevor + Sean
EOIN - LEAD PREP

Aanbark: 08:30 local
Constrafino 08:30

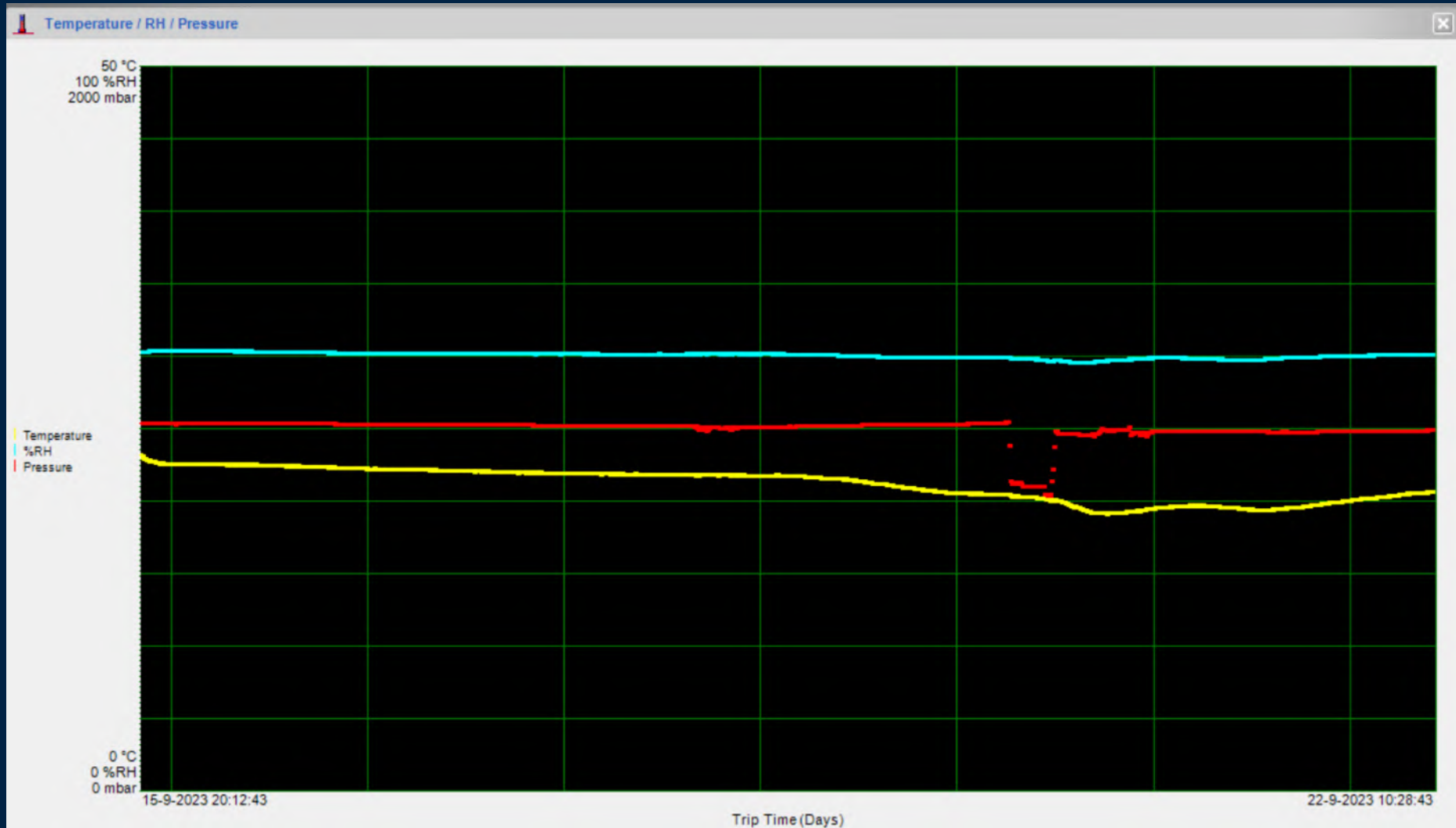
Uittladen 09:30
10:30

SAVER uit 09:34
10:34

57% RH 22°C



Climate



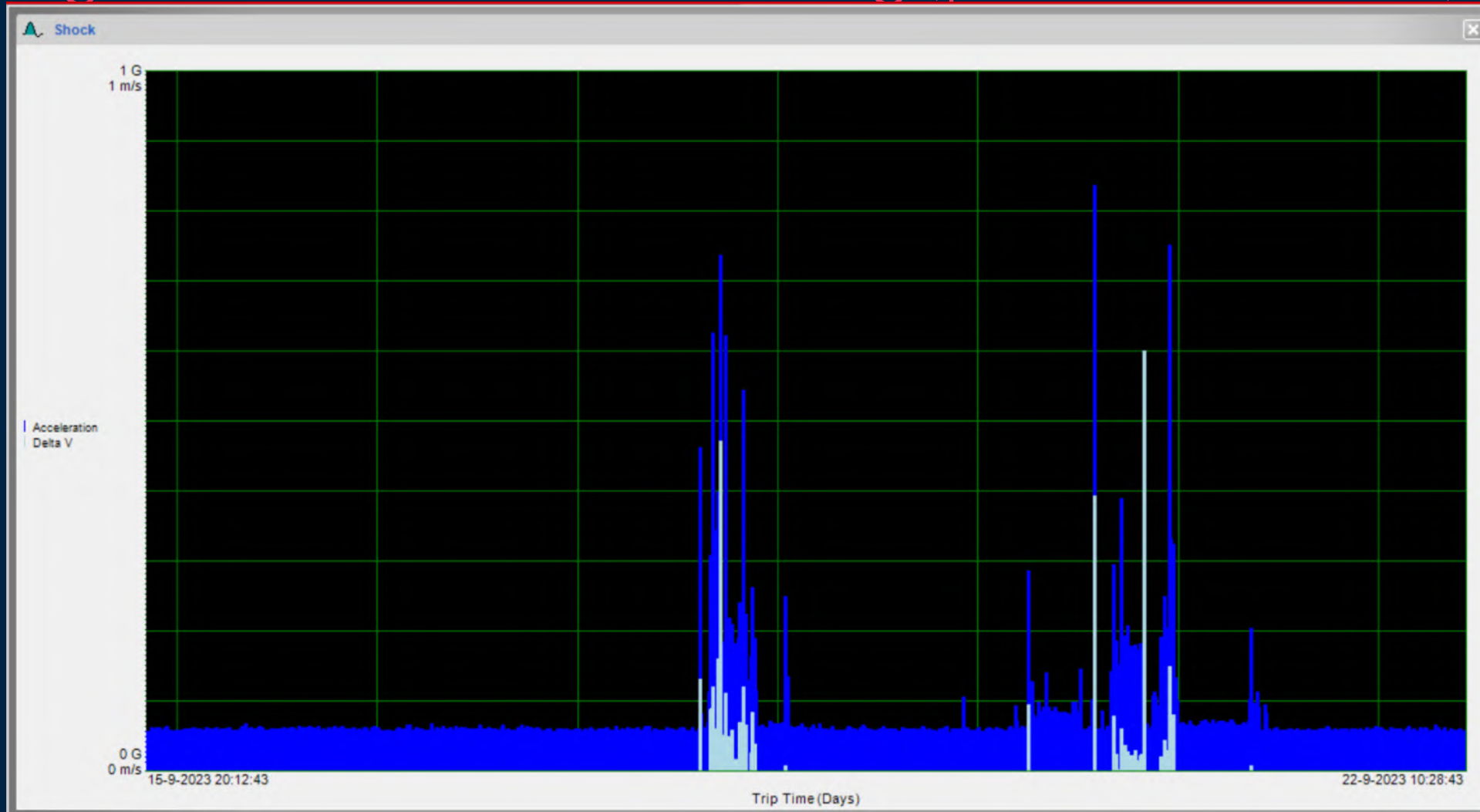
Temperature
19,1°C – 23,3°C

Relative Humidity
59,0% – 60,8%

Pressure
816 – 1017 mbar

Shock - Raw data

Highest shock Around the 0,85g (peak acceleration)



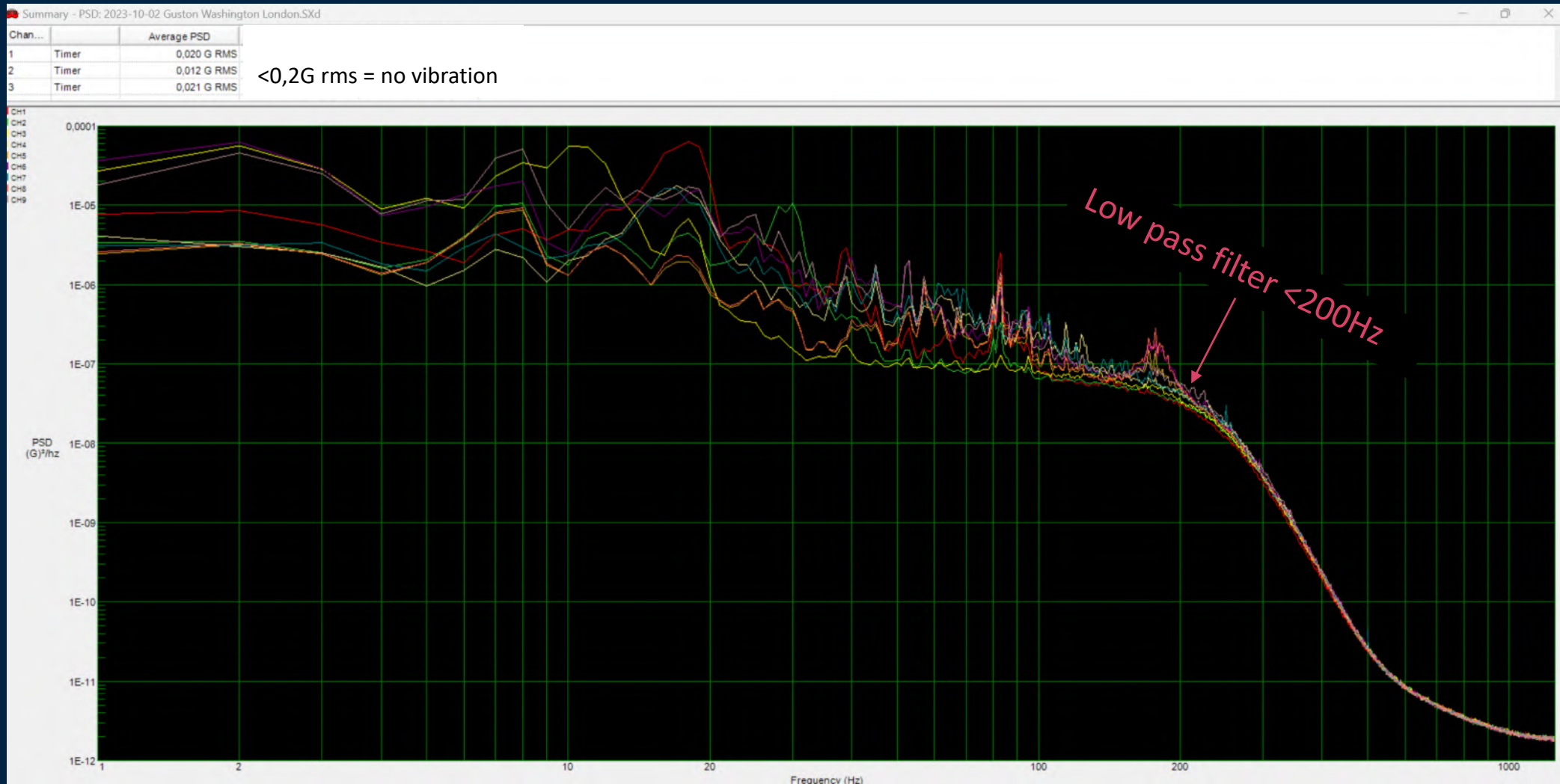
Shock - Analysed data - Luik London Truck

Highest shock Around the 0,85g (peak acceleration)



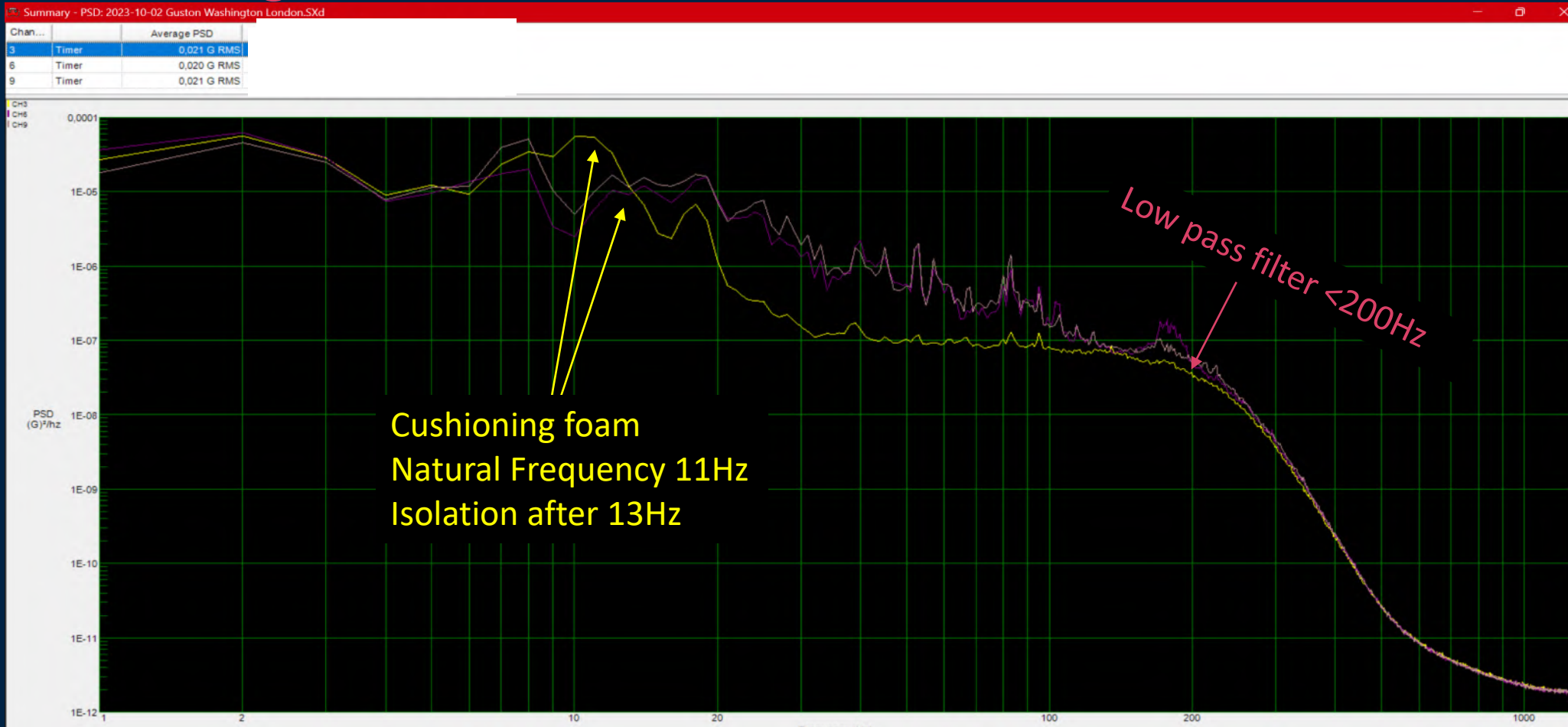
Vibration - Raw data

The averaged Root Mean Square (R.M.S.) was below the 0,2g



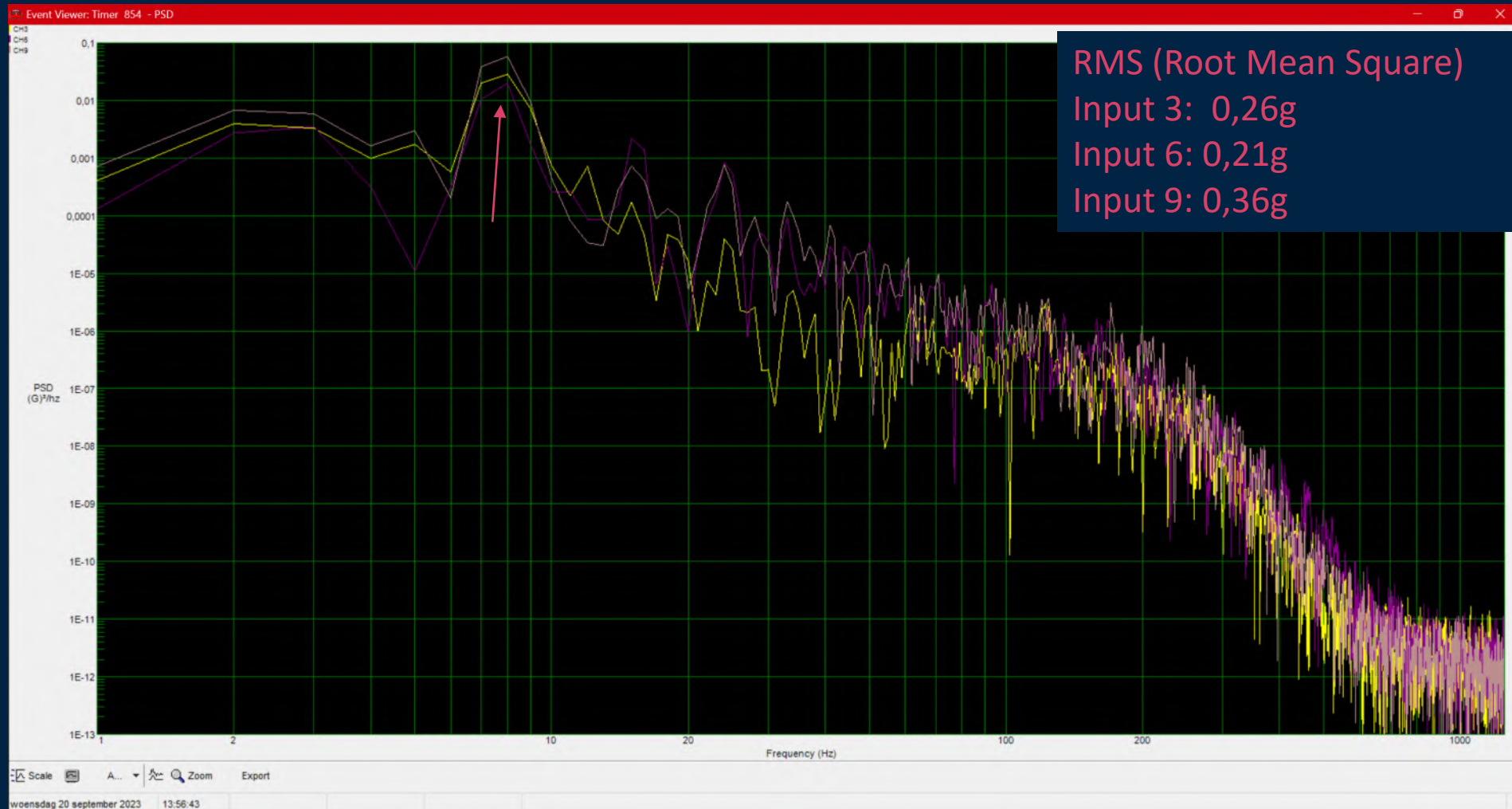
Vibration - Analyzed data

The used cushioning foam material gives an Isolation g-factor of 50% between 13 and 100Hz !!!



Vibration - Analyzed data

The natural frequency is 8Hz during the truck transport



Stedelijk Museum Amsterdam

